



PH6/PH7 Software Upgrade Guide

1. Upgrade version and CPS

Download the CPS and radio version firmware.

 CPS_V3.06.016.B2(En).zip

 Upgrade To V3.06.05.B1_A.zip

2. Check Firmware Version and Device Information

Check the firmware version and device information as below:

- 1) Go to the home screen;
- 2) Press OK button to enter the main menu and choose Device Info;
- 3) Check the firmware version, DSP version, RCDB version, frequency range and serial number, etc.

Or get the device information by reading through CPS. You can contact after sales to get version comparison table.

Basic Information	
Model Name	PH690
Serial Number	1234567890
Model Type	Portable
Model Number	PH690-GMBD00000000-U1-C
Frequency Band[MHz]	400-470
Firmware Version	V3.06.05.B1
RCDB Version	D3.06.016
DSP Version	V3.06.05.B2A
Bootloader Version	V3.06.002
Bluetooth Version	V2.02
Last Programming Date	2020-03-13,14:02

3. Software Upgrade

3.1 Before Upgrade

3.1.1 Get the one-click upgrade software for the target version.

3.1.2 Prepare the radio to upgrade, take away the cover of accessory interface on the side.

3.1.3 Prepare the data cable (Type: AP340). Connect its USB port to your computer USB port, connect the other side to your radio accessory interface port and fasten it.

AP340 Data Cable:



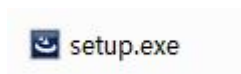
3.2 Upgrade Procedure

3.2.1 Install the upgrade software package

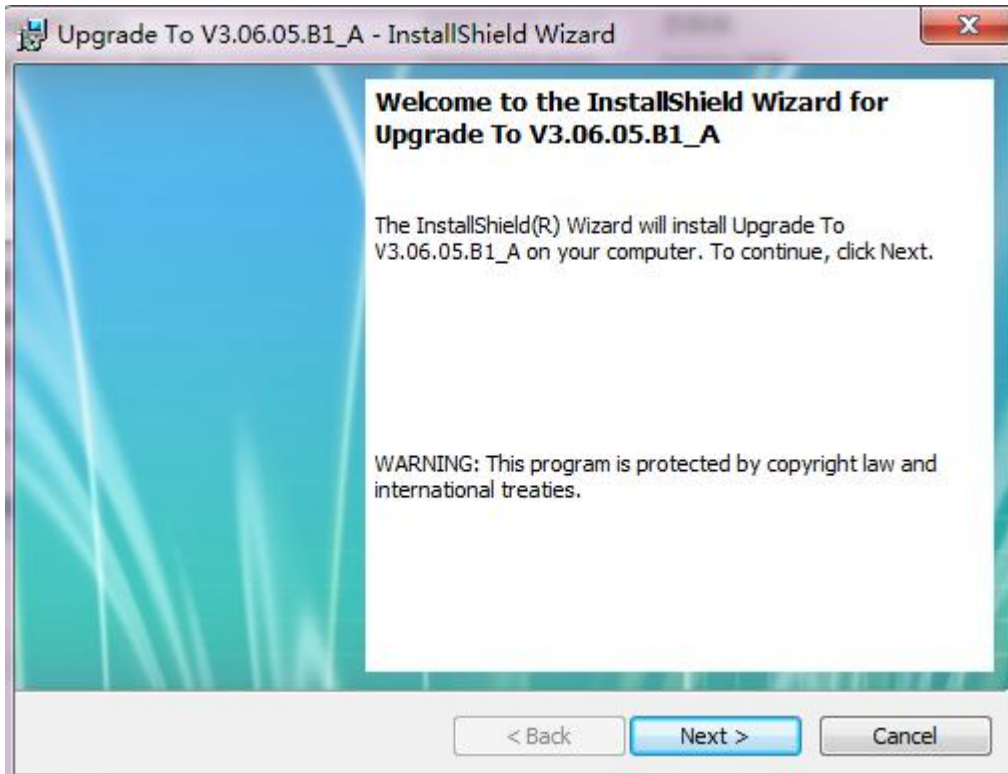
1) Click to open the upgrade software, choose the language according to your requirement (Cn for Chinese, En for English);



2) Double click setup.exe in the chosen language folder;



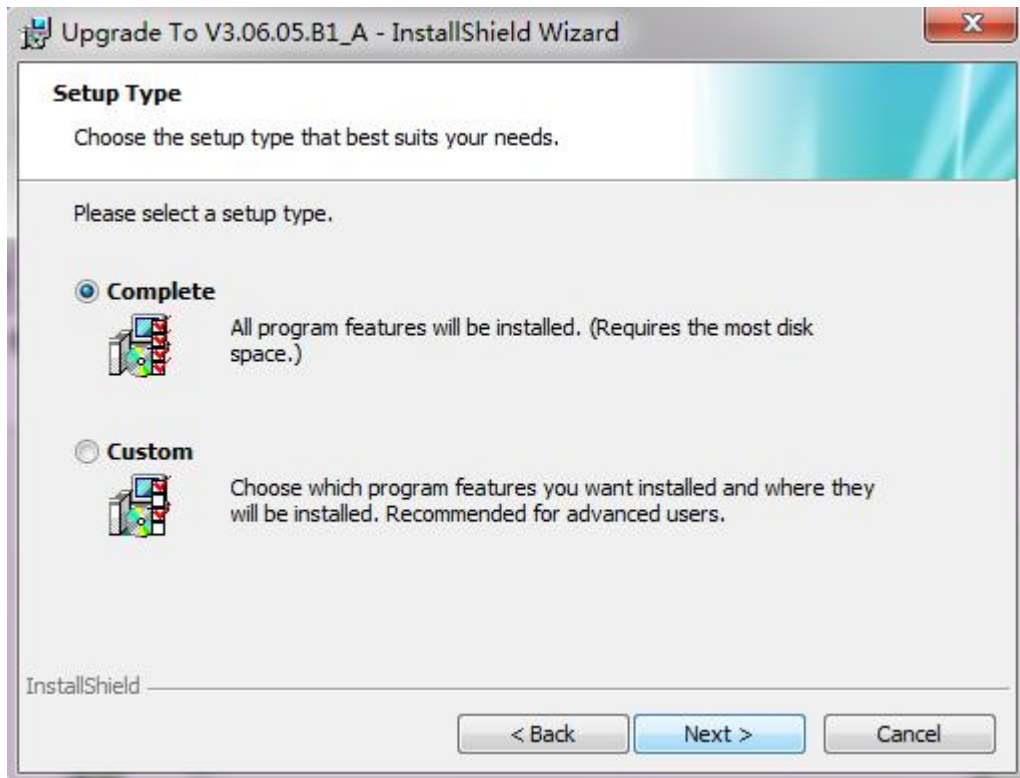
3) Click Next in the below interface;



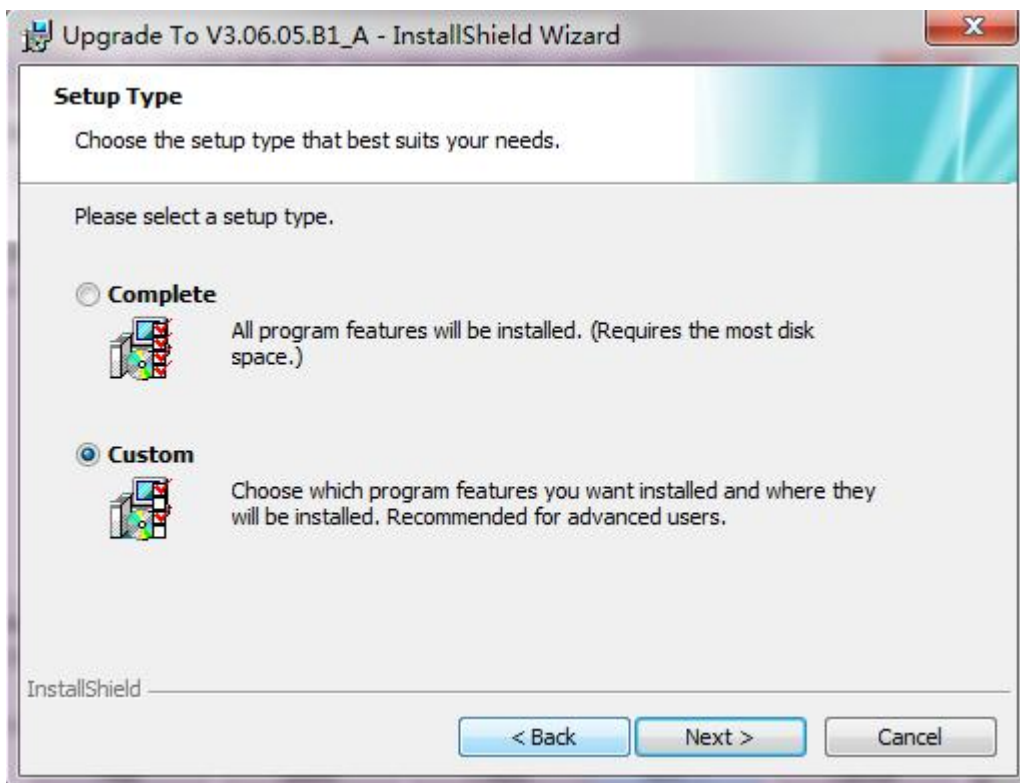
4) Select 'I accept' and click Next in the below interface;



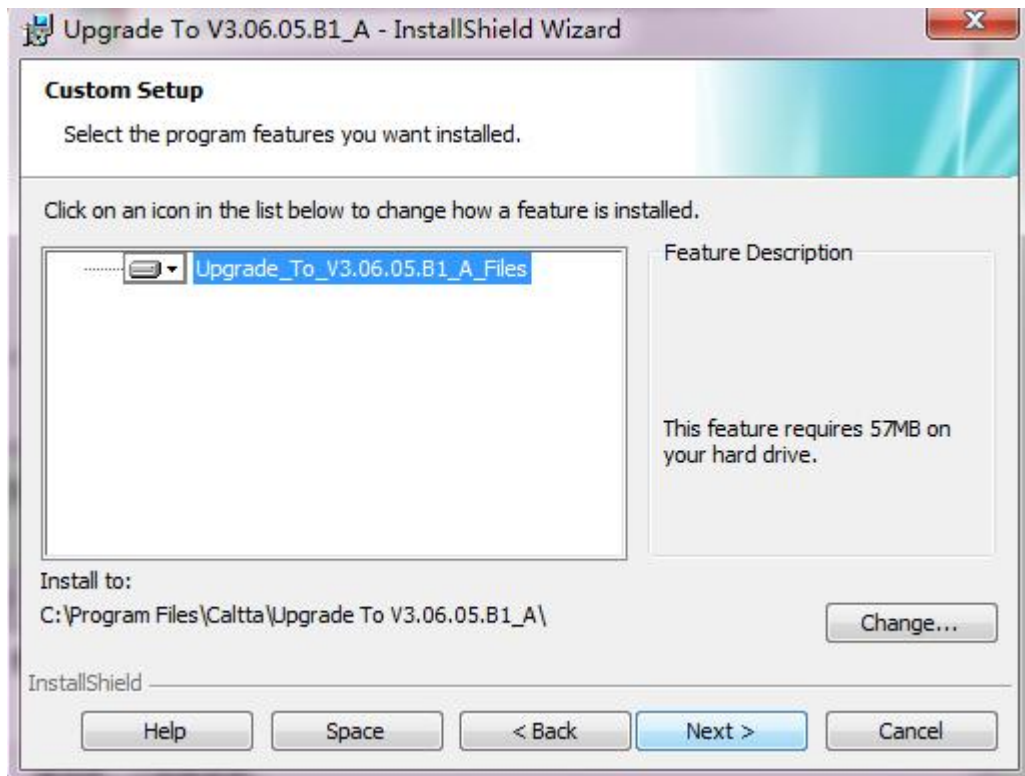
5) Select Complete and click Next if you use the default installation path;



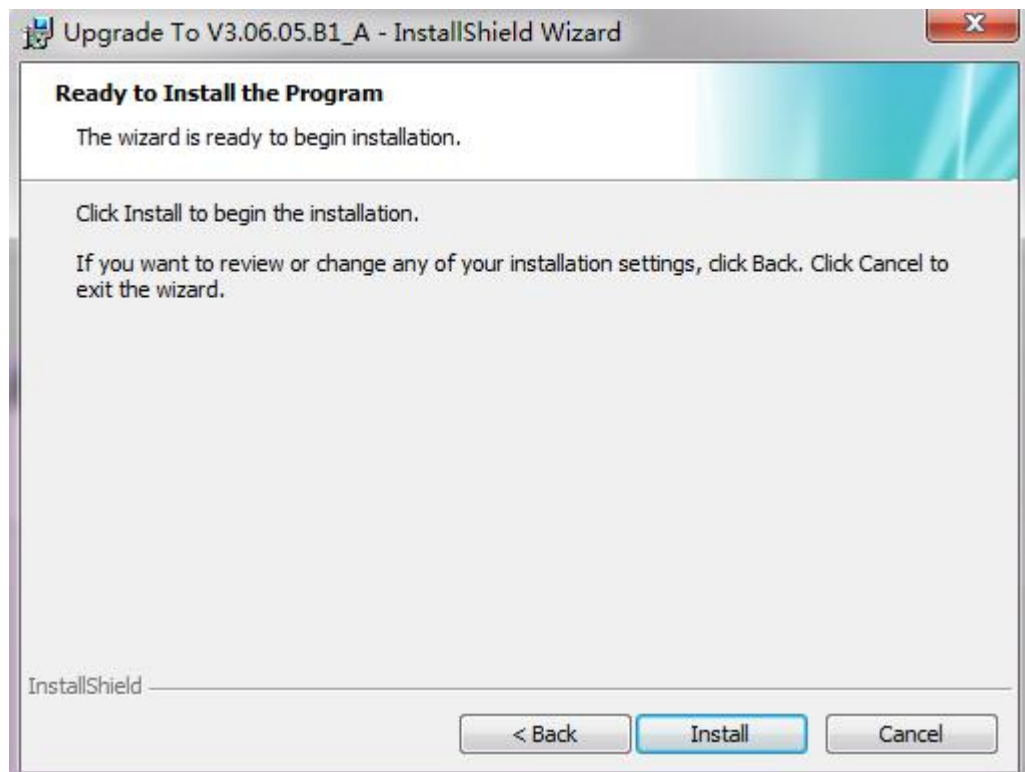
Select Custom and click Next if you choose your own installation path;



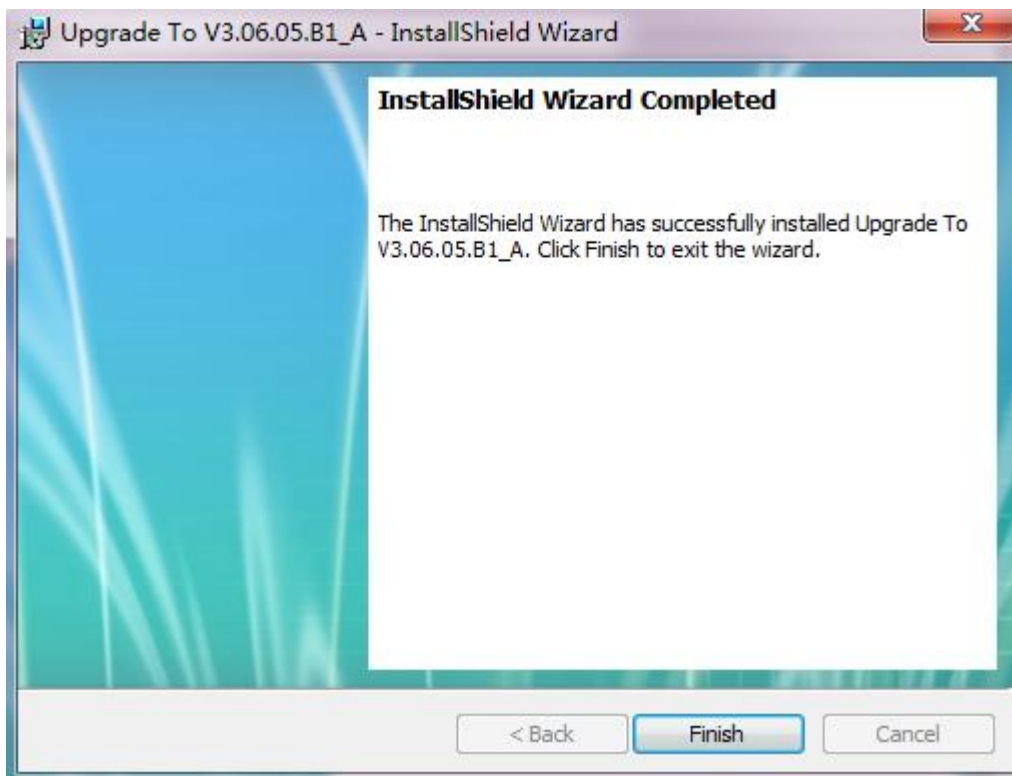
Click Change to modify the installation path, then click Next;



6) Click Install to confirm installation.



7) Wait the installation to complete. Click Finish to end one-click upgrade procedure.



8) An icon will be on desktop after installation.



3.2.2 Radio Upgrade

- 1) Connect the radio to the PC through the data cable;
- 2) Double click the upgrade tools icon to run it;
- 3) The radio enters into the flash burn mode, press the PTT button and TK button (on the top) at the same time, and rotate the volume knob to power on the radio, the radio enters into the upgrade mode;

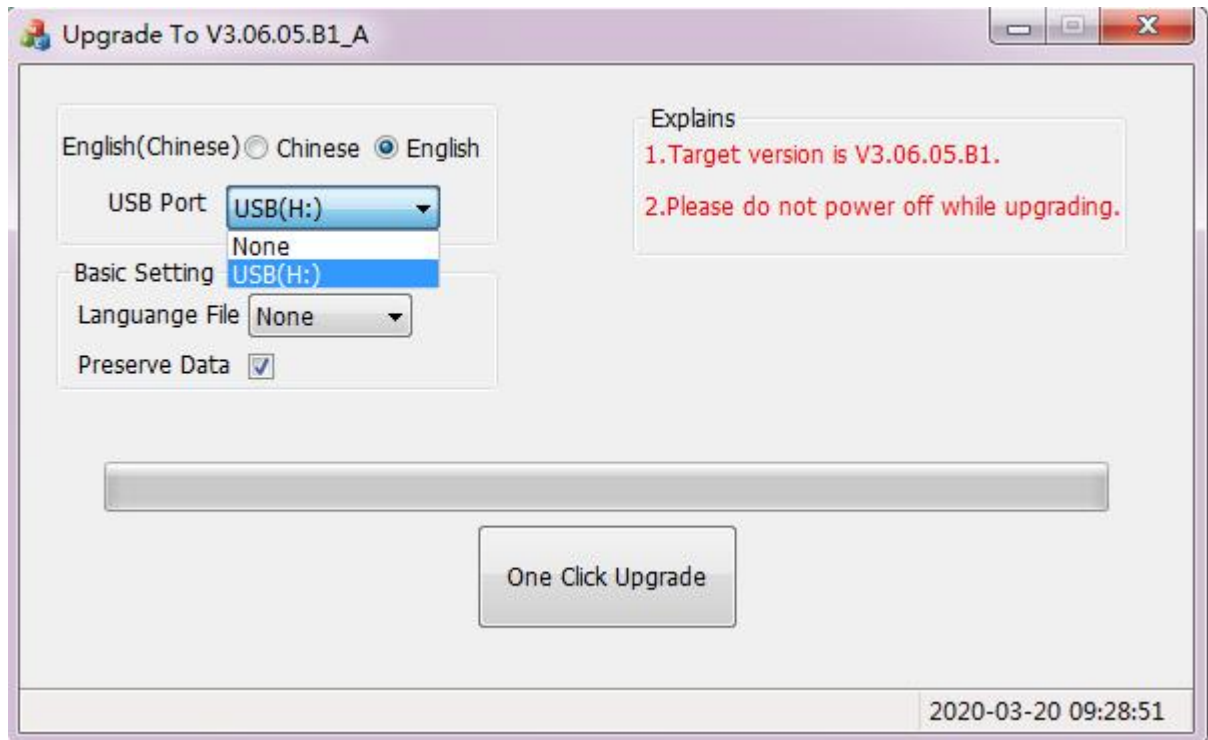


The LED indicator glows green:



4) After the upgrade software detects the USB port and displays it, you can select the corresponding USB port and click to upgrade.

5) Choose English language and clear check box "preserve data" to enforce upgrade the radio. (In normal case you can choose Chinese or English language, and choose if preserve the current setting data when upgrade the radio.)

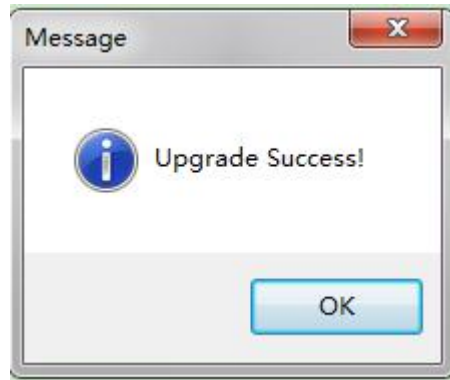


6) The LED indicator flashes green during the upgrade, the radio displays the following interface:



7) Upgrade complete prompt;

After upgrade completes, the software tools will display as below:




Note:

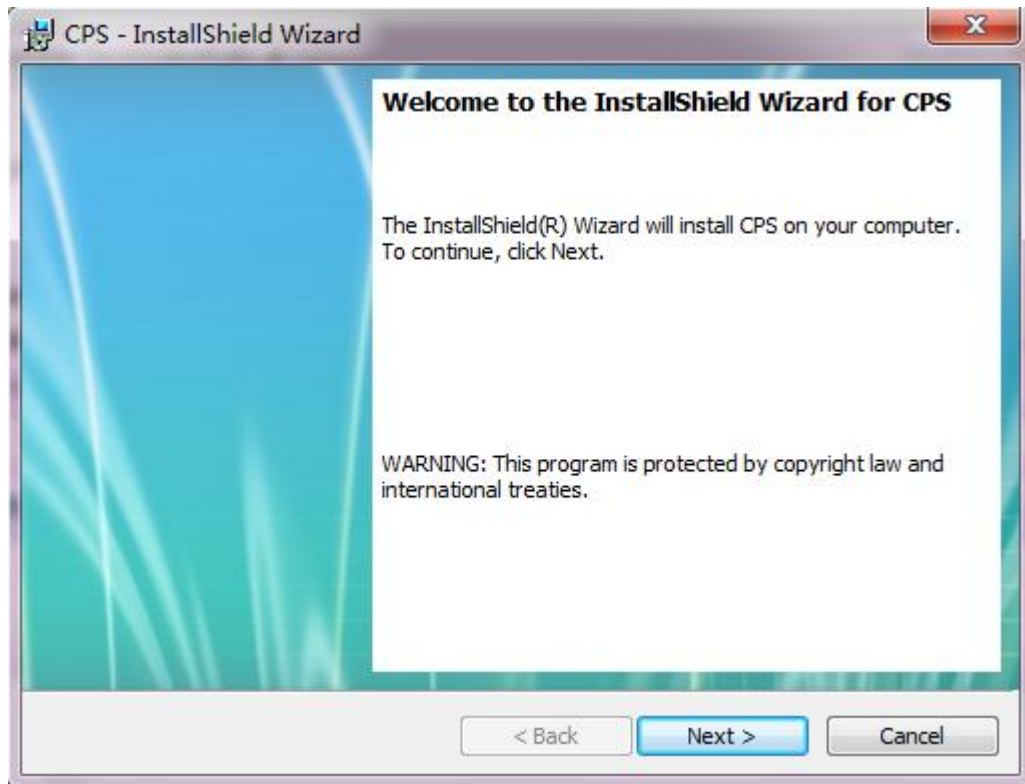
- *Don't power off the radio during the upgrade.*
 - *If upgrade fails, please repeat the upgrade procedure.*
- 8) Reboot the radio after upgrade to check if the firmware is the target version.

4. CPS Software

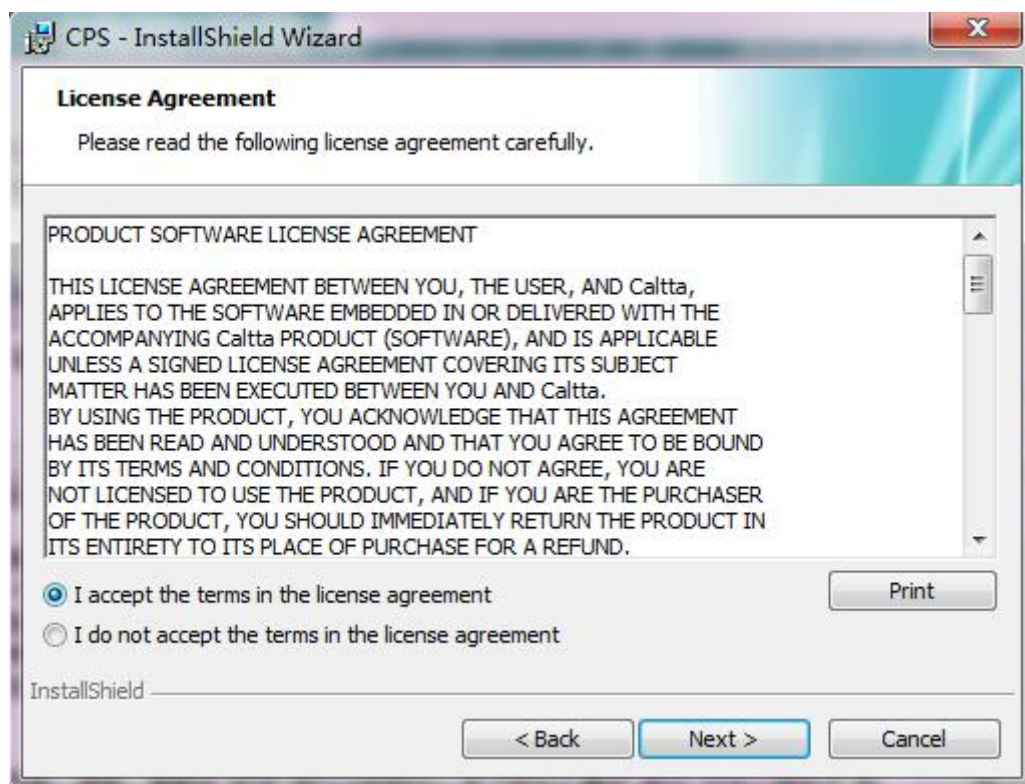
4.1 CPS Software Installation Procedure



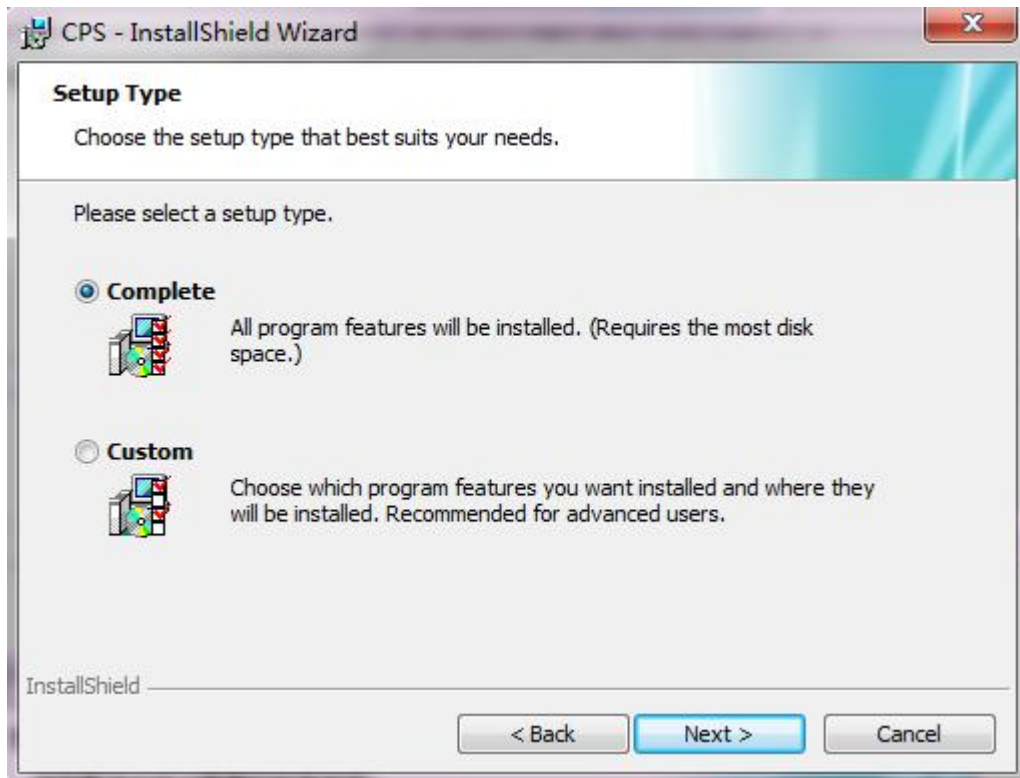
- 1) Start installation, double click  to install;
- 2) Click Next following the prompt.



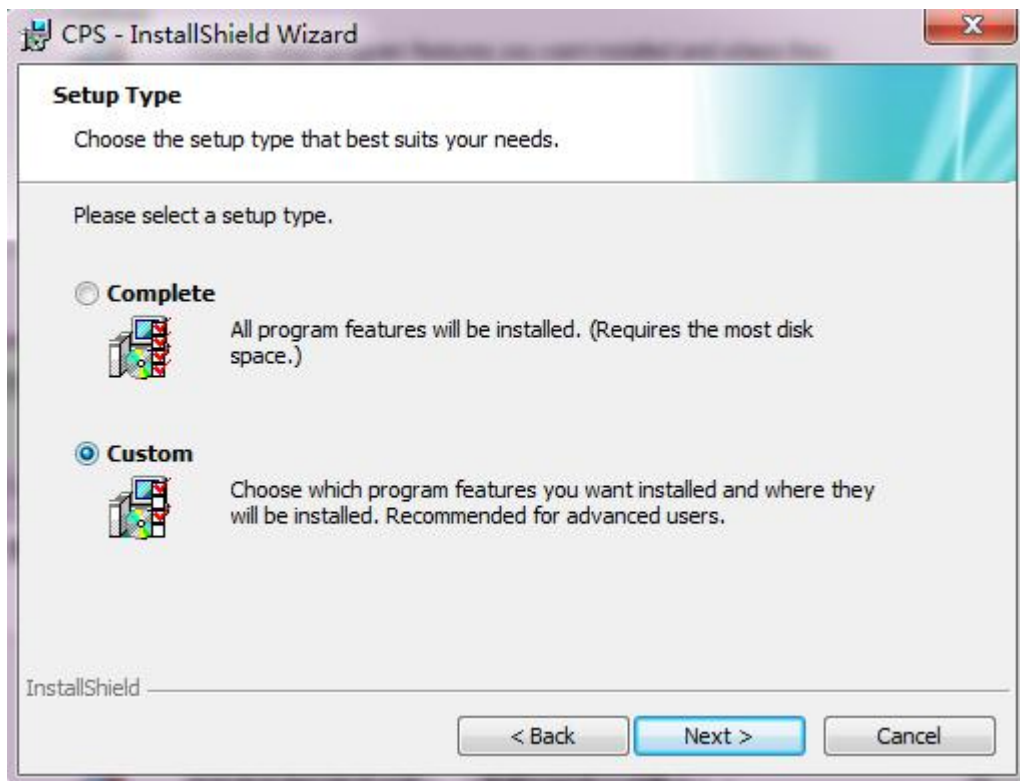
3) Select 'I Accept' and click Next.



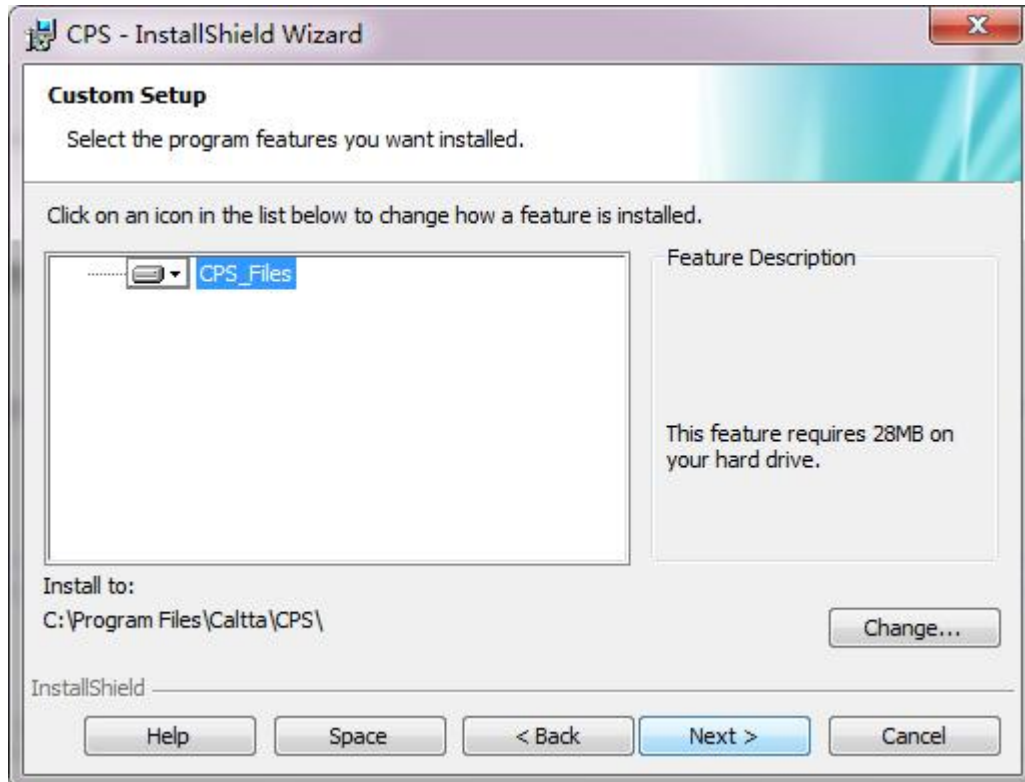
4) Select Complete and click Next if you use the default installation path.



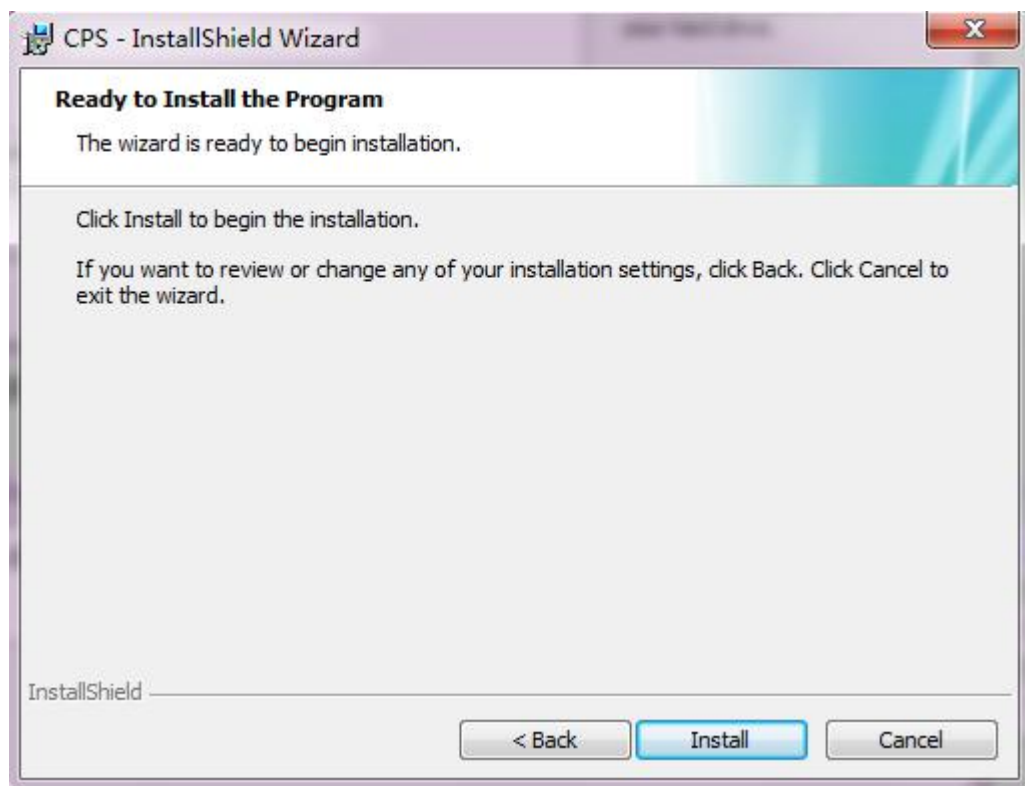
Select Custom and click Next if you choose your own installation path.



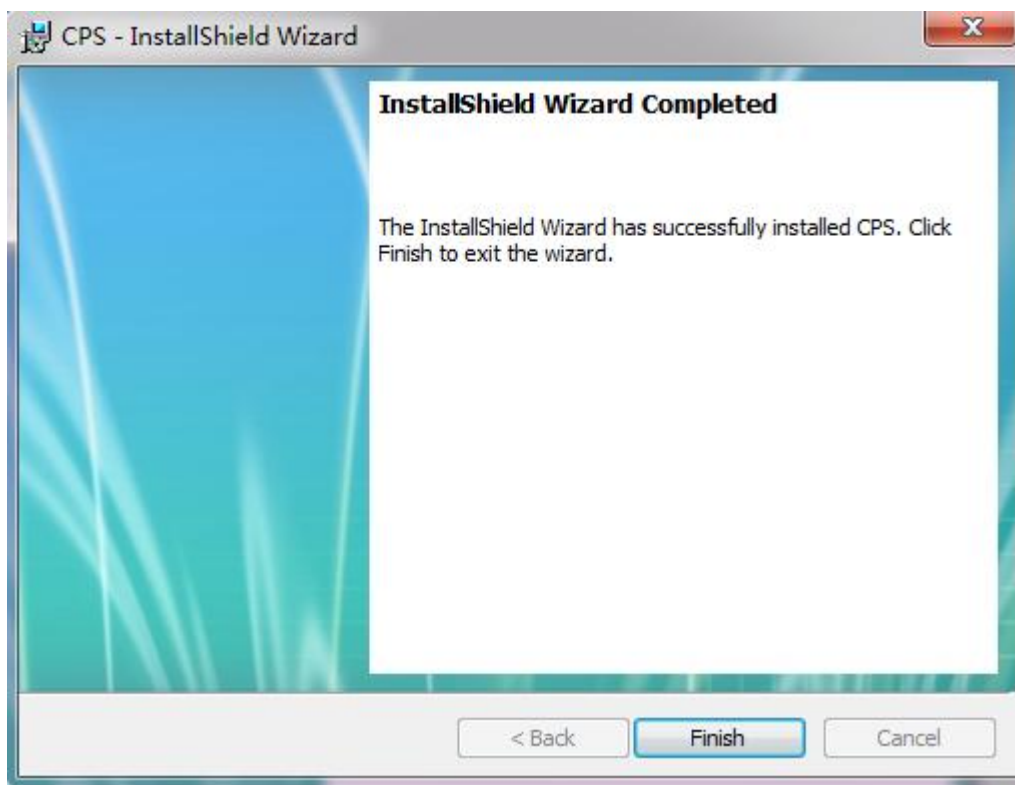
Click Change to modify the installation path, then click Next.



5) Click Install to confirm installation.



6) Wait the installation to complete. Click Finish to end CPS tools installation procedure.




7) An icon will be on desktop after installation:



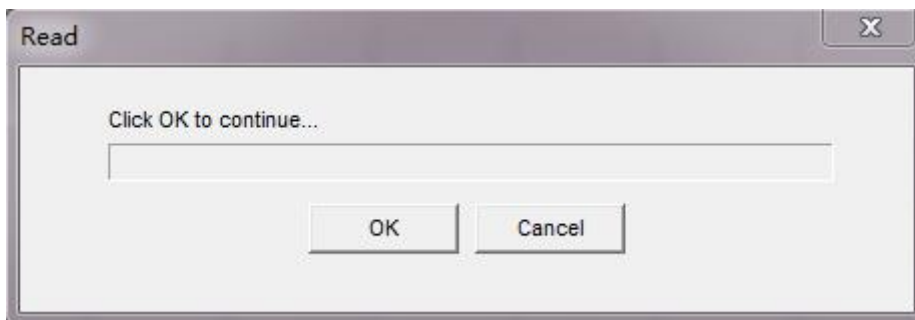
4.2 CPS Read

CPS read function can be started by shortcut key combination Ctrl + R or shortcut

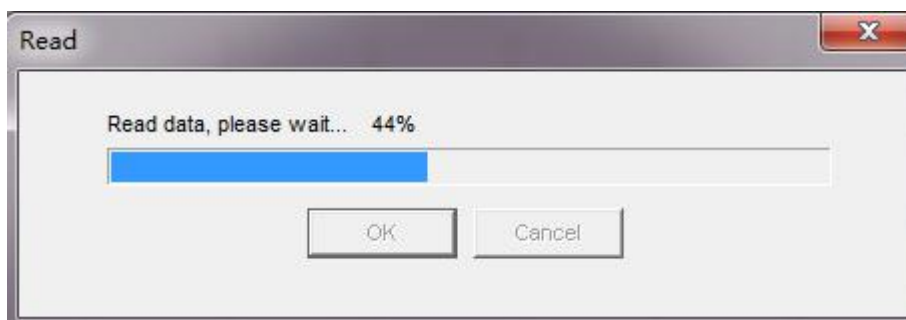
icon  to read data from the radio.

Precondition: The radio is power on in user mode.

1) Connect the radio with data cable, and connect data cable USB port to the computer, click CPS read to display the following interface;



2) Click OK to continue, the radio displays reading and the CPS interface displays as below;




3) A pop-up message on the radio display will indicate read success after about 10 seconds, the radio goes back to home display. The CPS will indicate read success as below.



4) Click OK to complete CPS read.

4.3 CPS Write

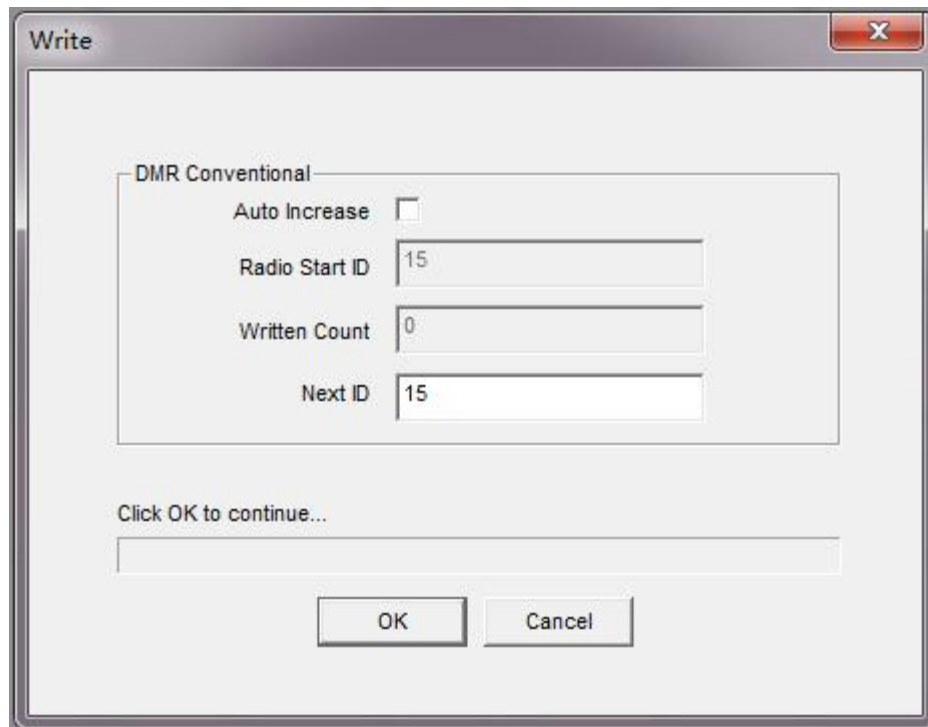
CPS write function can be started by shortcut key combination Ctrl + W or shortcut

icon  to write data into the radio.

Precondition: The radio database version and type code are consistent with the database version and type code of the data currently edited by the CPS software. The radio is

power on in user mode.

- 1) CPS software is used to configure data in template.
- 2) Connect the radio with data cable, and connect data cable USB port to the computer, click CPS write to display the following interface;



Write

DMR Conventional

Auto Increase

Radio Start ID 15

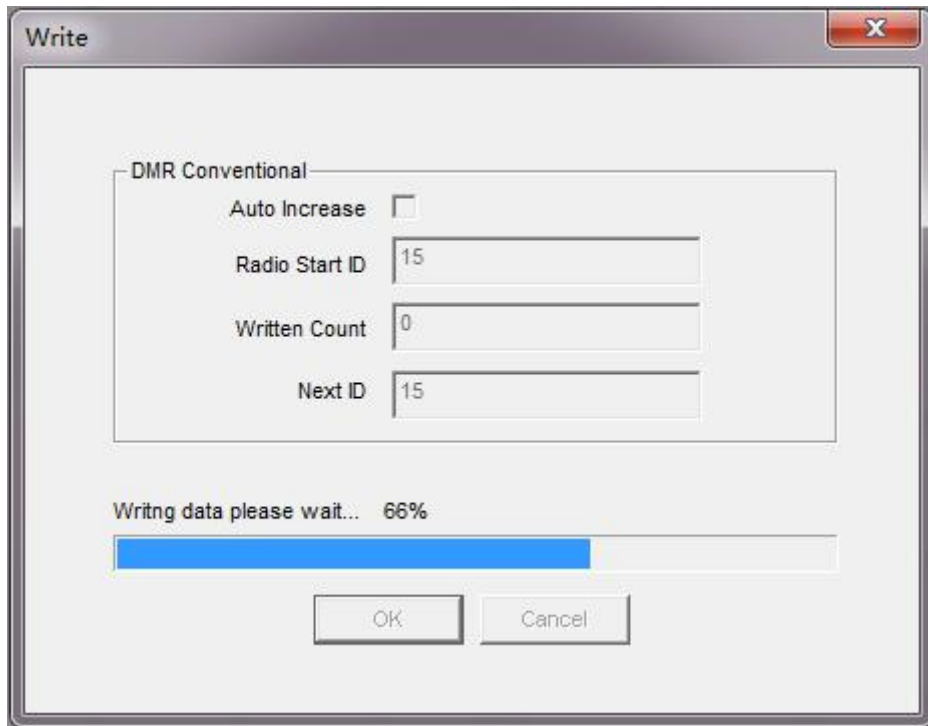
Written Count 0

Next ID 15

Click OK to continue...

OK Cancel

- 3) Click OK to continue, the radio displays writing and the CPS interface displays as below;



4) The radio automatically reboots after about 10 seconds. The CPS will indicate write success as below.



5) Click OK to complete CPS write.